

A: FIND A NEW APP

Finding Apps

Apps (short for Applications) are small software that run on your mobile device. There is an app for almost anything! Some are free, and some are paid apps.

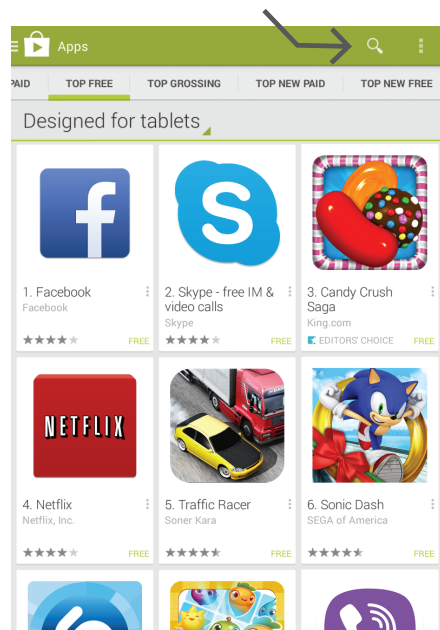
Open the Play Store

On your device, find and tap on the [Play Store](#) icon.



Search and Browse

Within the Play Store, tap on Apps button to filter the store for apps. From there you can use the Search (magnifying glass icon), or browse recent additions, top apps, apps on sale, editor's picks, and more.



B: INSTALL YOUR APP

Download Apps

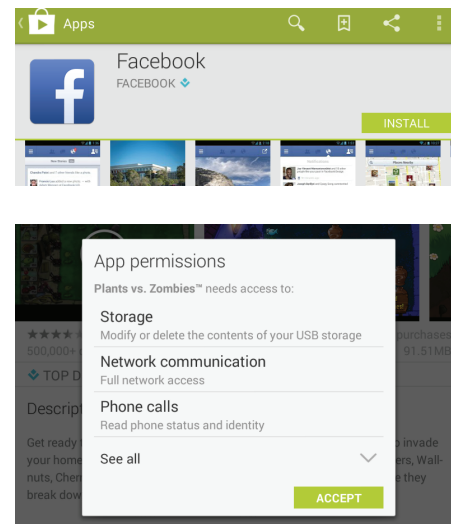
Note: it's best to download apps using wi-fi on your device, rather than using up data. Some apps are large in size.

Read About the App

You can tap on an app icon in the store to bring up more information about the app. If the app costs money, it is especially worthwhile taking some time to check ratings and read reviews before purchasing. Google Play Store does not pre-test apps for bugs, malware, fake apps, and so on. There is only a 15 minute refund policy if you purchase a bad app or change your mind.

Download

To install an app, tap the **INSTALL** (or \$ amount) button and then tap **ACCEPT** to approve the list of permissions required by the app. Your new app will start loading, and the app icon will appear on your home screen or in your app drawer.



C: CLOSE YOUR APPS

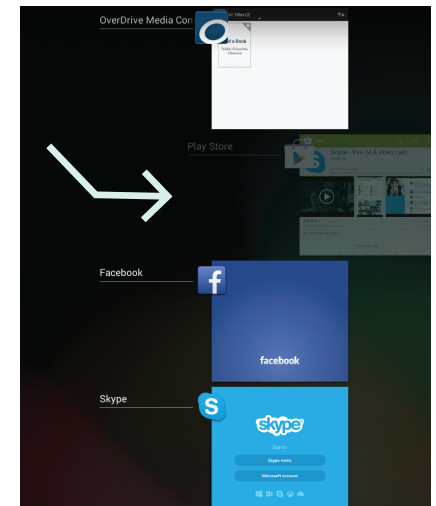
Background Apps

You multitask in Android by running multiple apps at once and bouncing between them. Apps do not shut down when you go to your home screen. Android manages your power and RAM use, and will shut down background apps as resources are used up. But you can choose to close apps manually.

Recent Applications

Launch the Recent Applications list (check your manual, as this varies on devices). Scroll the list of recent apps to find the app you wish to close. Swipe the app to the right to close it and remove it from the list.

Swiping an app closed from the Recent Applications list will stop the current task (e.g., closing an open email) but will allow the closed app to continue routine background process (e.g., checking for new email, sending you notifications, etc).



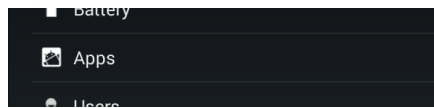
D: DELETE AN APP

Want To Get Rid of an App?

If you are planning to access the settings and other information associated with your app, you will first need to back up your device before deleting the app. Deleting apps will delete all files, settings, and information used and created in that app. If the app is related to a web-based account (such as Facebook), deleting the app will not delete your account or online content.

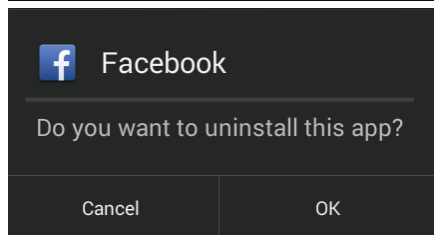
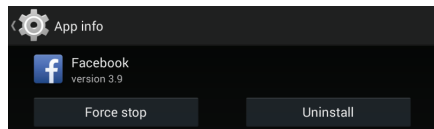
Settings

Locate and tap on your Settings icon in your app drawer. Tap on Apps to bring up a list.



Choose

Scroll through the list of installed apps to find the one you want to uninstall. Tap on the app to bring up an App Info screen. Tap the Uninstall button, and tap OK to confirm.



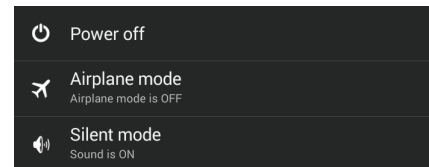
E: SHUT DOWN

Turning It Off

There are many reasons to turn your device off. You may wish to conserve battery life, take a technology break, remove distractions from important life events (such as weddings), or restart the device to address performance issues.

Press and Hold

The location of the power button on devices will vary, check your device manual if you need help finding it. Press and hold the power button to bring up a dialog box and tap Power Off. Tap OK to confirm.



And On Again

To turn the device back on, press and hold the Power button again. A loading screen will appear for a few moments while the device starts up.

FOR FURTHER HELP

Free Library Classes

Go to the TNRD Library website for info on upcoming classes at your local library: www.tnrplib.ca

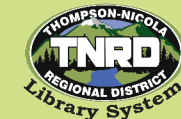
Android Support

Check out your device manufacturer's website for any tech support, tutorials, and manuals available.

ANDROID OS & APPS

Quick Tips

A basic guide for installing, deleting, and closing apps using an Android mobile device.



tnrdlib.ca